

UNIT 361* – 2 BEDROOM APARTMENT

Type 6, Pemberton House - £515,000

KEY ROOM DIMENSIONS

KITCHEN	4.04m x 2.45m	13'3" x 8'0"
LIVING/DINING ROOM	7.58m x 3.80m	24'10" x 12'5"
MASTER BEDROOM	5.25m x 3.38m	17'2" x 11'1"
BEDROOM 2	3.61m x 2.92m	11'10" x 9'7"
GROSS INTERNAL FLOOR AREA	80.70 sq m	868.65 sq ft
BALCONY	7.50 sq m	80.73 sq ft



LEVEL LOCATION FLOOR LOCATOR

- 6th floor
- 5th floor
- 4th floor
- 3rd floor
- 2nd floor
- 1st floor
- Ground floor



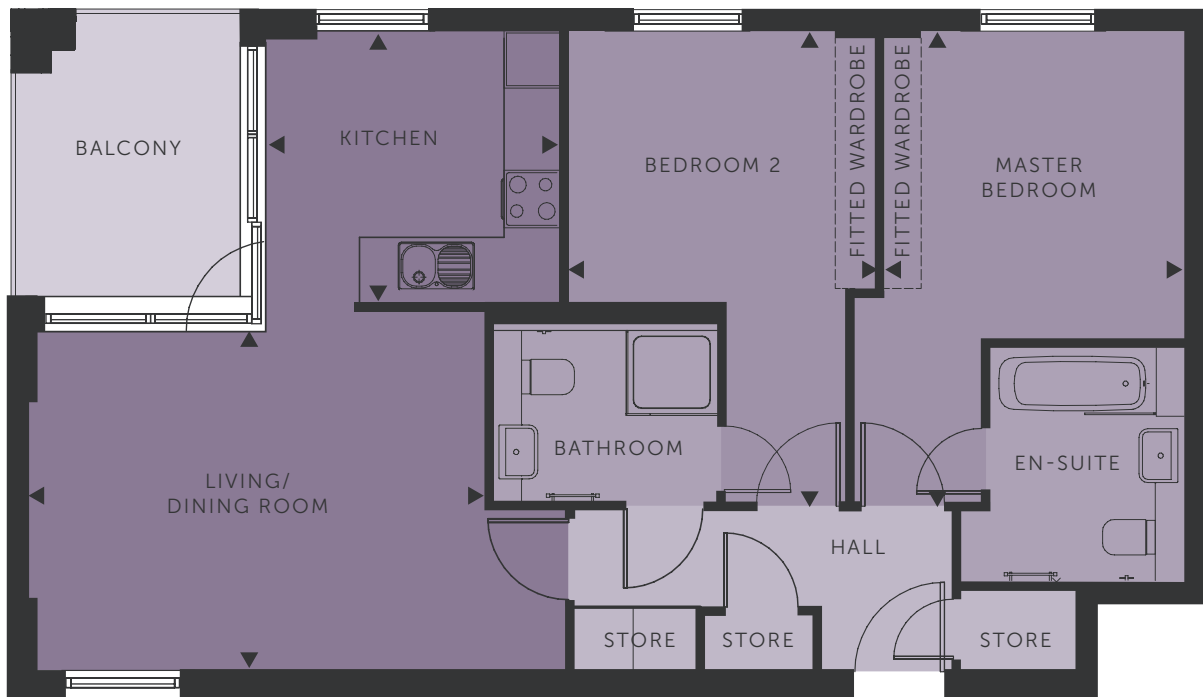
*Handed

UNIT 318 – 2 BEDROOM APARTMENT

Type 10, Pemberton House - £468,000

KEY ROOM DIMENSIONS

KITCHEN	3.08m x 2.80m	10'1" x 9'2"
LIVING/DINING ROOM	4.73m x 3.48m	15'6" x 11'5"
MASTER BEDROOM	4.92m x 3.11m	16'1" x 10'2"
BEDROOM 2	4.92m x 3.11m	16'1" x 10'2"
GROSS INTERNAL FLOOR AREA	70.80 sq m	762.08 sq ft
BALCONY	6.43 sq m	69.21 sq ft



LEVEL LOCATION FLOOR LOCATOR

- 6th floor
- 5th floor
- 4th floor
- 3rd floor
- 2nd floor
- 1st floor
- Ground floor

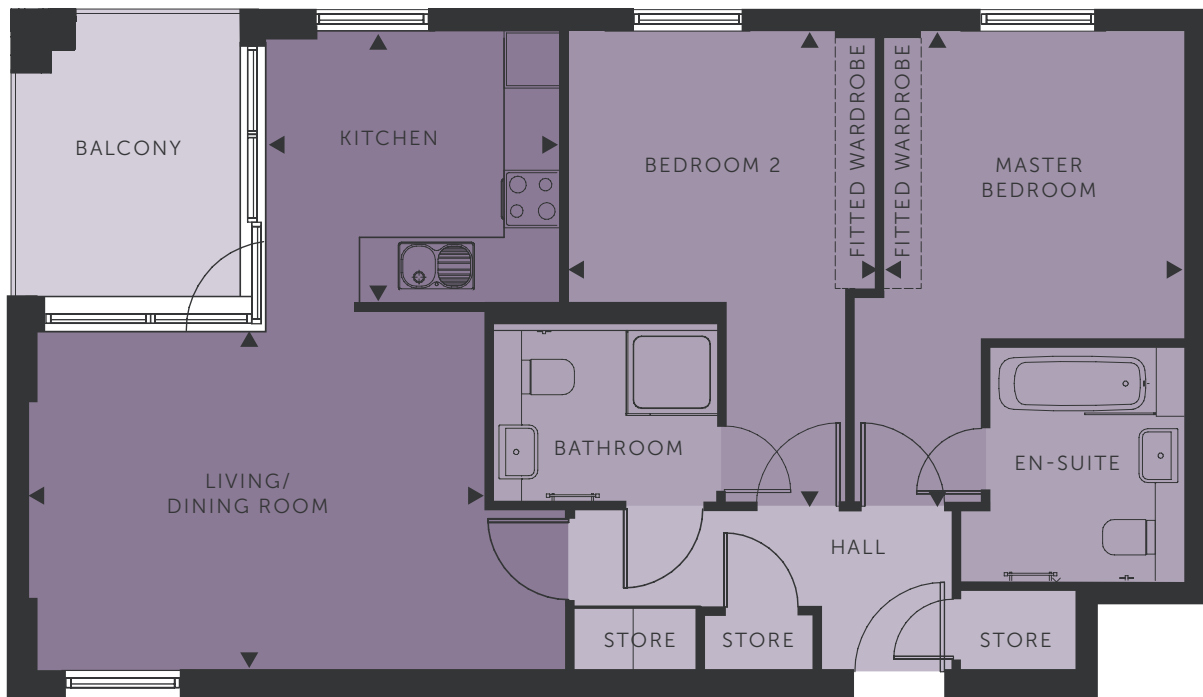


UNIT 328 – 2 BEDROOM APARTMENT

Type 10, Pemberton House - £472,000

KEY ROOM DIMENSIONS

KITCHEN	3.08m x 2.80m	10'1" x 9'2"
LIVING/DINING ROOM	4.73m x 3.48m	15'6" x 11'5"
MASTER BEDROOM	4.92m x 3.11m	16'1" x 10'2"
BEDROOM 2	4.92m x 3.11m	16'1" x 10'2"
GROSS INTERNAL FLOOR AREA	70.80 sq m	762.08 sq ft
BALCONY	6.43 sq m	69.21 sq ft



LEVEL LOCATION FLOOR LOCATOR

- 6th floor
- 5th floor
- 4th floor
- 3rd floor
- 2nd floor
- 1st floor
- Ground floor

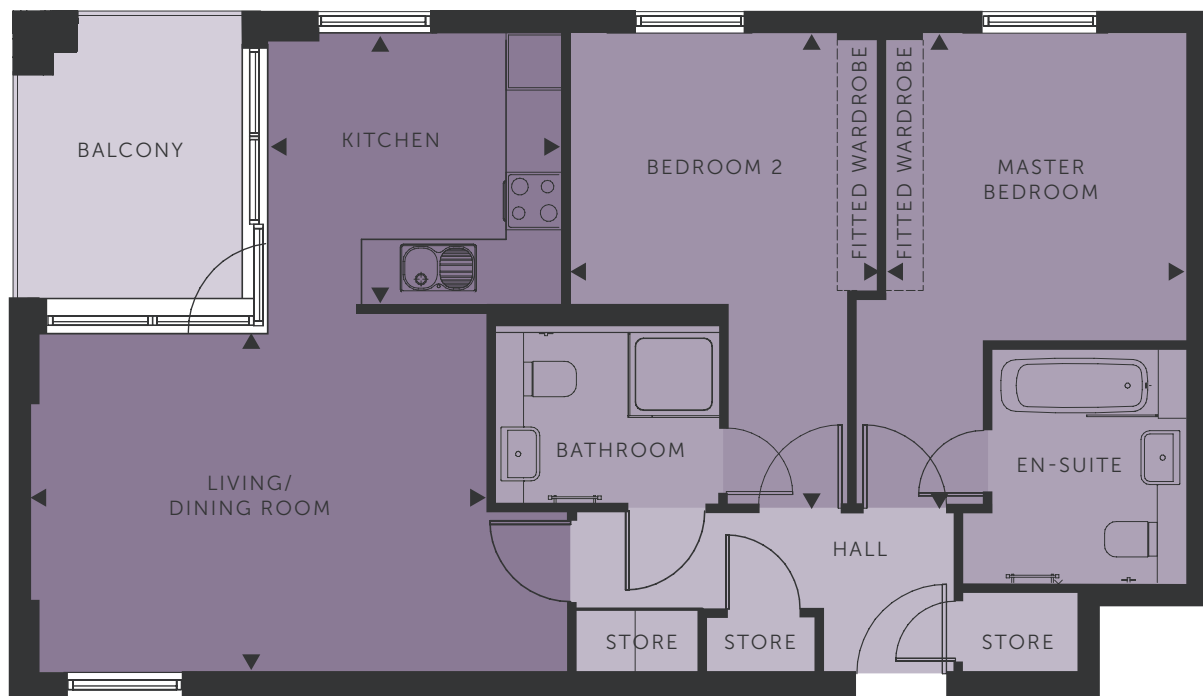


UNIT 348 – 2 BEDROOM APARTMENT

Type 10, Pemberton House - £480,500

KEY ROOM DIMENSIONS

KITCHEN	3.08m x 2.80m	10'1" x 9'2"
LIVING/DINING ROOM	4.73m x 3.48m	15'6" x 11'5"
MASTER BEDROOM	4.92m x 3.11m	16'1" x 10'2"
BEDROOM 2	4.92m x 3.11m	16'1" x 10'2"
GROSS INTERNAL FLOOR AREA	70.80 sq m	762.08 sq ft
BALCONY	6.43 sq m	69.21 sq ft



LEVEL LOCATION FLOOR LOCATOR

- 6th floor
- 5th floor
- 4th floor
- 3rd floor
- 2nd floor
- 1st floor
- Ground floor

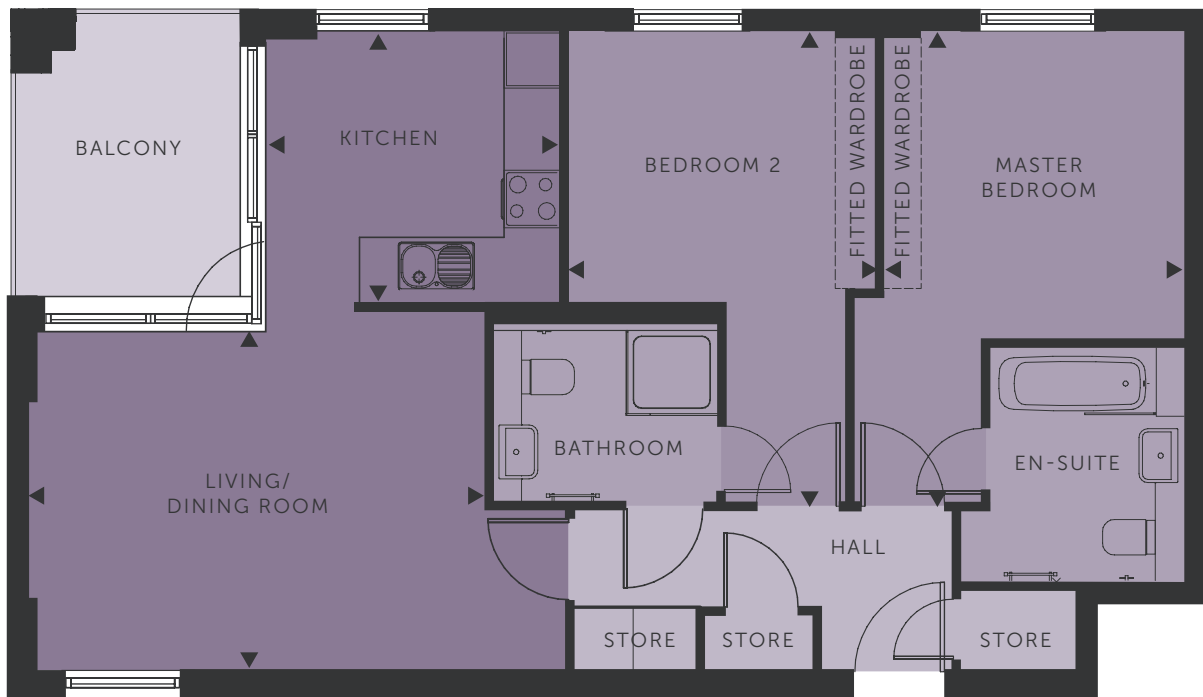


UNIT 313* – 2 BEDROOM APARTMENT

Type 10, Pemberton House - £465,500

KEY ROOM DIMENSIONS

KITCHEN	3.08m x 2.80m	10'1" x 9'2"
LIVING/DINING ROOM	4.73m x 3.48m	15'6" x 11'5"
MASTER BEDROOM	3.11m x 3.23m	10'2" x 10'7"
BEDROOM 2	3.17m x 2.80m	10'5" x 9'2"
GROSS INTERNAL FLOOR AREA	70.80 sq m	762.08 sq ft
BALCONY	6.43 sq m	69.21 sq ft



LEVEL LOCATION FLOOR LOCATOR

-  6th floor
-  5th floor
-  4th floor
-  3rd floor
-  2nd floor
-  1st floor
-  Ground floor



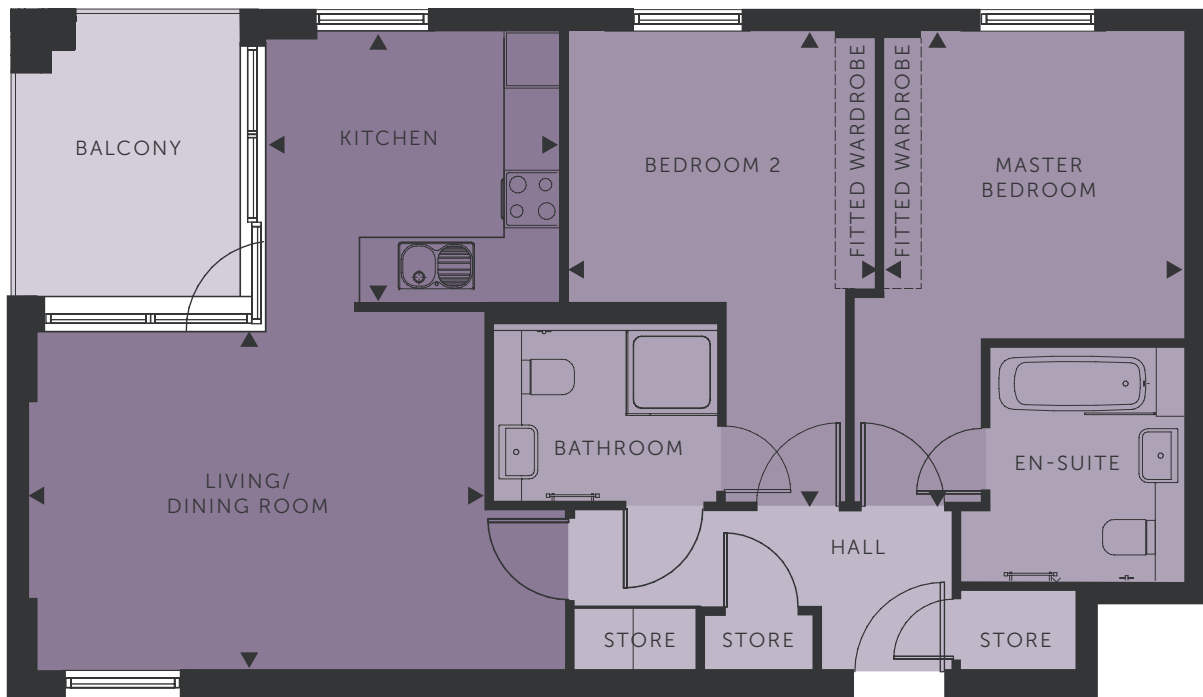
*Handed

UNIT 314* – 2 BEDROOM APARTMENT

Type 10, Pemberton House - £465,500

KEY ROOM DIMENSIONS

KITCHEN	3.08m x 2.80m	10'1" x 9'2"
LIVING/DINING ROOM	4.73m x 3.48m	15'6" x 11'5"
MASTER BEDROOM	3.11m x 3.23m	10'2" x 10'7"
BEDROOM 2	3.17m x 2.80m	10'5" x 9'2"
GROSS INTERNAL FLOOR AREA	70.80 sq m	762.08 sq ft
BALCONY	6.43 sq m	69.21 sq ft



LEVEL LOCATION FLOOR LOCATOR

- 6th floor
- 5th floor
- 4th floor
- 3rd floor
- 2nd floor
- 1st floor
- Ground floor



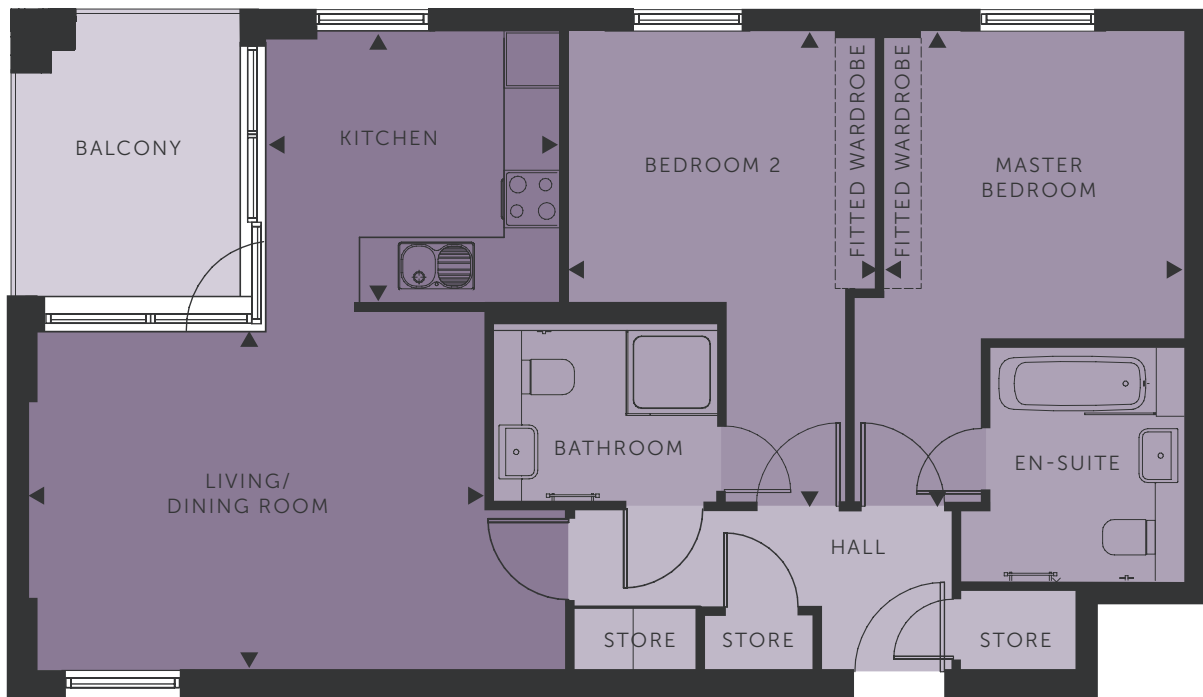
*Handed

UNIT 323* – 2 BEDROOM APARTMENT

Type 10, Pemberton House - £000,000 **323 is not on the website list**

KEY ROOM DIMENSIONS

KITCHEN	3.08m x 2.80m	10'1" x 9'2"
LIVING/DINING ROOM	4.73m x 3.48m	15'6" x 11'5"
MASTER BEDROOM	4.92m x 3.11m	16'1" x 10'2"
BEDROOM 2	4.92m x 3.11m	16'1" x 10'2"
GROSS INTERNAL FLOOR AREA	70.80 sq m	762.08 sq ft
BALCONY	6.43 sq m	69.21 sq ft



LEVEL LOCATION FLOOR LOCATOR

- 6th floor
- 5th floor
- 4th floor
- 3rd floor
- 2nd floor
- 1st floor
- Ground floor



*Handed

UNIT 324* – 2 BEDROOM APARTMENT

Type 10, Pemberton House - £468,000

KEY ROOM DIMENSIONS

KITCHEN	3.08m x 2.80m	10'1" x 9'2"
LIVING/DINING ROOM	4.73m x 3.48m	15'6" x 11'5"
MASTER BEDROOM	4.92m x 3.11m	16'1" x 10'2"
BEDROOM 2	4.92m x 3.11m	16'1" x 10'2"
GROSS INTERNAL FLOOR AREA	70.80 sq m	762.08 sq ft
BALCONY	6.43 sq m	69.21 sq ft



LEVEL LOCATION FLOOR LOCATOR

- 6th floor
- 5th floor
- 4th floor
- 3rd floor
- 2nd floor
- 1st floor
- Ground floor



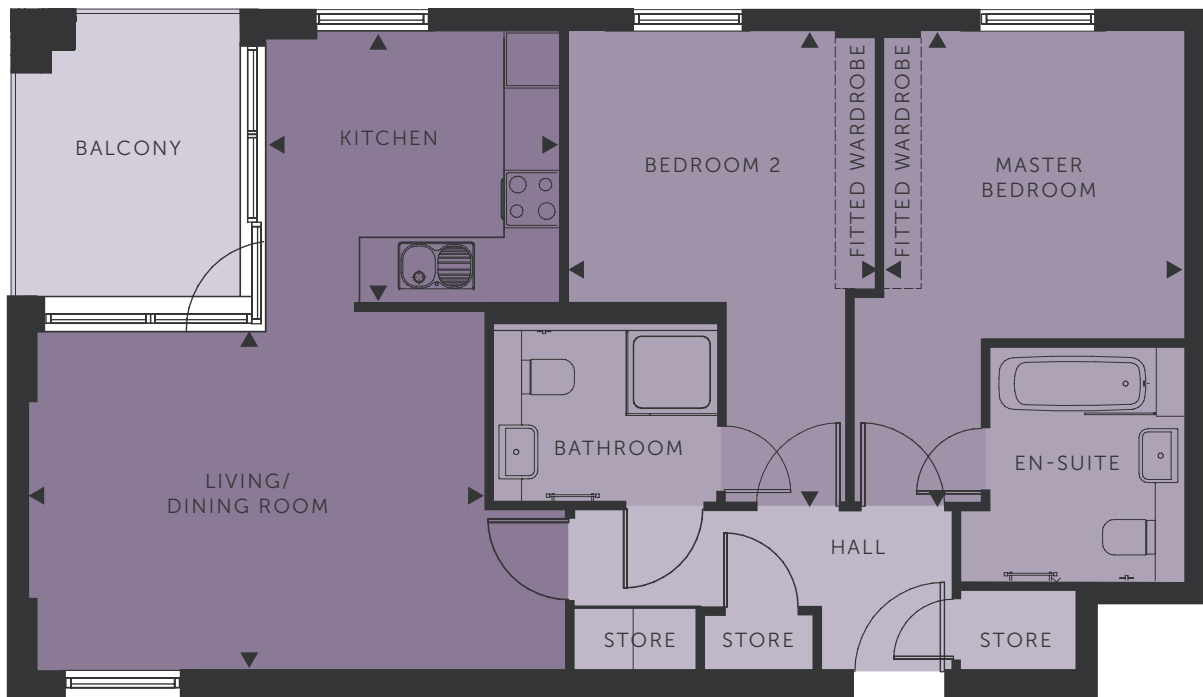
*Handed

UNIT 327 – 2 BEDROOM APARTMENT

Type 10, Pemberton House - £472,000

KEY ROOM DIMENSIONS

KITCHEN	3.08m x 2.80m	10'1" x 9'2"
LIVING/DINING ROOM	4.73m x 3.48m	15'6" x 11'5"
MASTER BEDROOM	4.92m x 3.11m	16'1" x 10'2"
BEDROOM 2	4.92m x 3.11m	16'1" x 10'2"
GROSS INTERNAL FLOOR AREA	70.80 sq m	762.08 sq ft
BALCONY	6.43 sq m	69.21 sq ft



LEVEL LOCATION FLOOR LOCATOR

- 6th floor
- 5th floor
- 4th floor
- 3rd floor
- 2nd floor
- 1st floor
- Ground floor

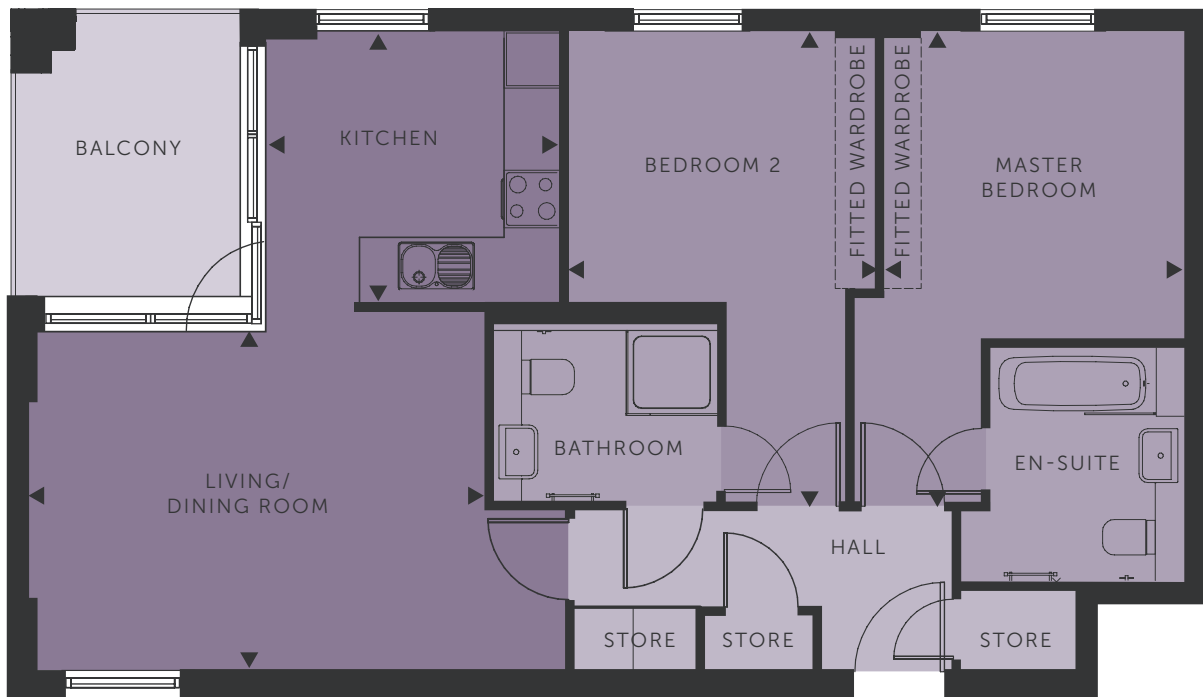


UNIT 334* – 2 BEDROOM APARTMENT

Type 10, Pemberton House - £472,000

KEY ROOM DIMENSIONS

KITCHEN	3.08m x 2.80m	10'1" x 9'2"
LIVING/DINING ROOM	4.73m x 3.48m	15'6" x 11'5"
MASTER BEDROOM	4.92m x 3.11m	16'1" x 10'2"
BEDROOM 2	4.92m x 3.11m	16'1" x 10'2"
GROSS INTERNAL FLOOR AREA	70.80 sq m	762.08 sq ft
BALCONY	6.43 sq m	69.21 sq ft



LEVEL LOCATION FLOOR LOCATOR

- 6th floor
- 5th floor
- 4th floor
- 3rd floor
- 2nd floor
- 1st floor
- Ground floor



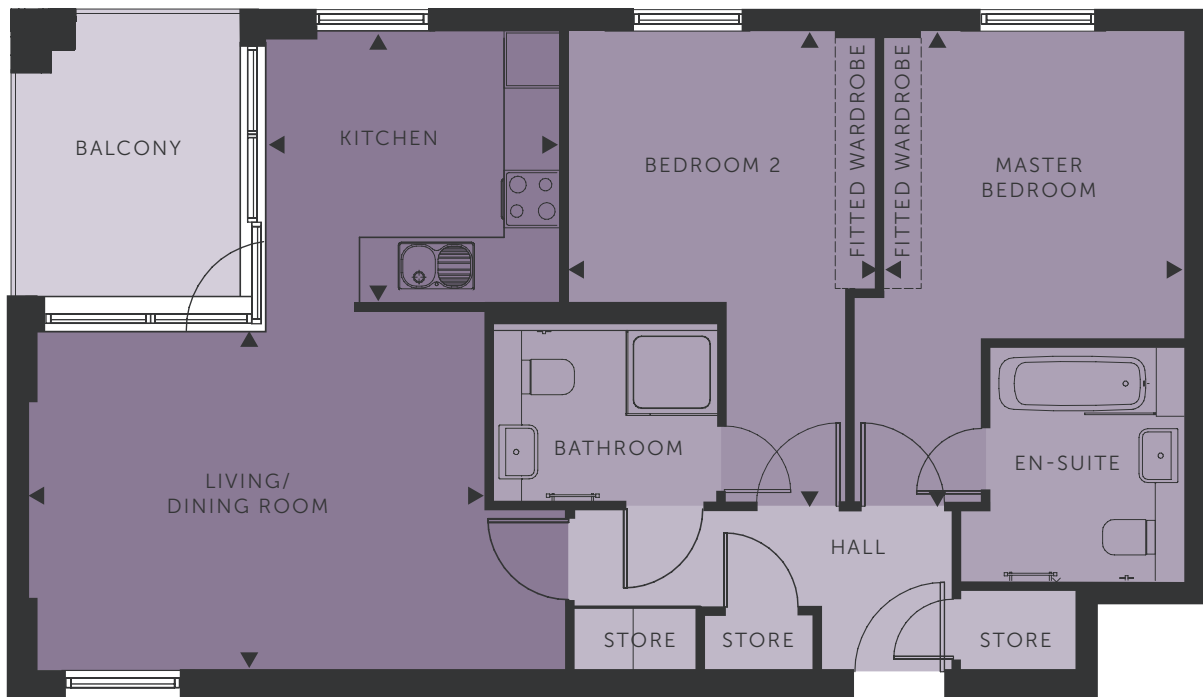
*Handed

UNIT 337 – 2 BEDROOM APARTMENT

Type 10, Pemberton House - £475,000

KEY ROOM DIMENSIONS

KITCHEN	3.08m x 2.80m	10'1" x 9'2"
LIVING/DINING ROOM	4.73m x 3.48m	15'6" x 11'5"
MASTER BEDROOM	4.92m x 3.11m	16'1" x 10'2"
BEDROOM 2	4.92m x 3.11m	16'1" x 10'2"
GROSS INTERNAL FLOOR AREA	70.80 sq m	762.08 sq ft
BALCONY	6.43 sq m	69.21 sq ft



LEVEL LOCATION FLOOR LOCATOR

- 6th floor
- 5th floor
- 4th floor
- 3rd floor
- 2nd floor
- 1st floor
- Ground floor

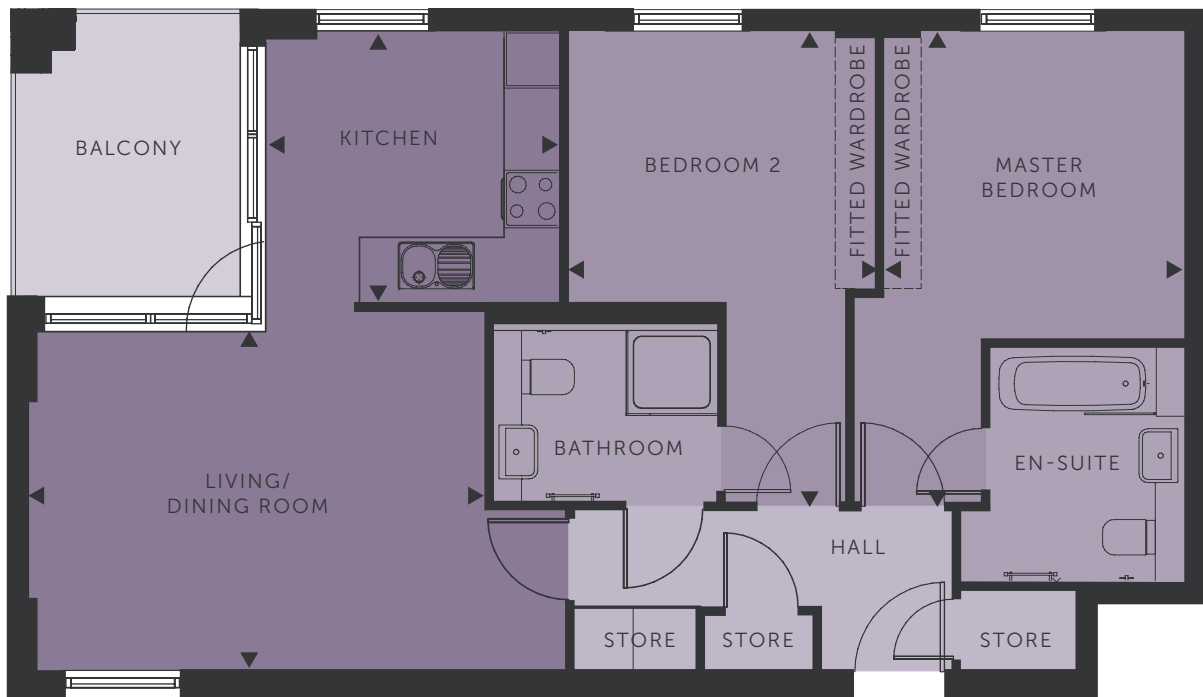


UNIT 338 – 2 BEDROOM APARTMENT

Type 10, Pemberton House - £475,000

KEY ROOM DIMENSIONS

KITCHEN	3.08m x 2.80m	10'1" x 9'2"
LIVING/DINING ROOM	4.73m x 3.48m	15'6" x 11'5"
MASTER BEDROOM	4.92m x 3.11m	16'1" x 10'2"
BEDROOM 2	4.92m x 3.11m	16'1" x 10'2"
GROSS INTERNAL FLOOR AREA	70.80 sq m	762.08 sq ft
BALCONY	6.43 sq m	69.21 sq ft



LEVEL LOCATION FLOOR LOCATOR

- 6th floor
- 5th floor
- 4th floor
- 3rd floor
- 2nd floor
- 1st floor
- Ground floor

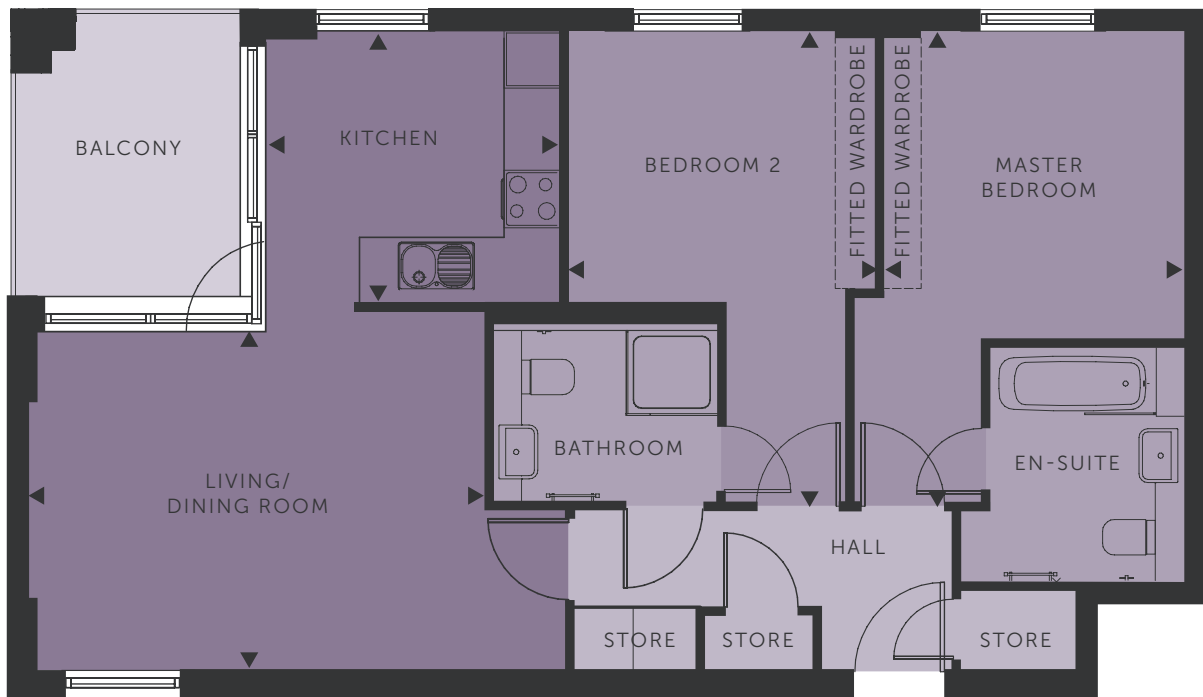


UNIT 353* – 2 BEDROOM APARTMENT

Type 10, Pemberton House - £480,500

KEY ROOM DIMENSIONS

KITCHEN	3.08m x 2.80m	10'1" x 9'2"
LIVING/DINING ROOM	4.73m x 3.48m	15'6" x 11'5"
MASTER BEDROOM	4.92m x 3.11m	16'1" x 10'2"
BEDROOM 2	4.92m x 3.11m	16'1" x 10'2"
GROSS INTERNAL FLOOR AREA	70.80 sq m	762.08 sq ft
BALCONY	6.43 sq m	69.21 sq ft



LEVEL LOCATION FLOOR LOCATOR

- 6th floor
- 5th floor
- 4th floor
- 3rd floor
- 2nd floor
- 1st floor
- Ground floor



*Handed

UNIT 340 – 2 BEDROOM APARTMENT

Type 11, Pemberton House - £475,500

KEY ROOM DIMENSIONS

KITCHEN	3.17m x 2.04m	10'4" x 6'8"
LIVING/DINING ROOM	5.70m x 4.45m	18'8" x 14'7"
MASTER BEDROOM	4.72m x 3.30m	15'5" x 10'9"
BEDROOM 2	3.57m x 3.21m	11'8" x 10'6"
GROSS INTERNAL FLOOR AREA	70.60 sq m	759.93 sq ft
BALCONY	7.00 sq m	75.35 sq ft



LEVEL LOCATION FLOOR LOCATOR

- 6th floor
- 5th floor
- 4th floor
- 3rd floor
- 2nd floor
- 1st floor
- Ground floor



UNIT 341* – 2 BEDROOM APARTMENT

Type 11, Pemberton House - £475,500

KEY ROOM DIMENSIONS

KITCHEN	3.17m x 2.04m	10'4" x 6'8"
LIVING/DINING ROOM	5.70m x 4.45m	18'8" x 14'7"
MASTER BEDROOM	4.72m x 3.30m	15'5" x 10'9"
BEDROOM 2	3.57m x 3.21m	11'8" x 10'6"
GROSS INTERNAL FLOOR AREA	70.60 sq m	759.93 sq ft
BALCONY	7.00 sq m	75.35 sq ft



LEVEL LOCATION FLOOR LOCATOR

- 6th floor
- 5th floor
- 4th floor
- 3rd floor
- 2nd floor
- 1st floor
- Ground floor



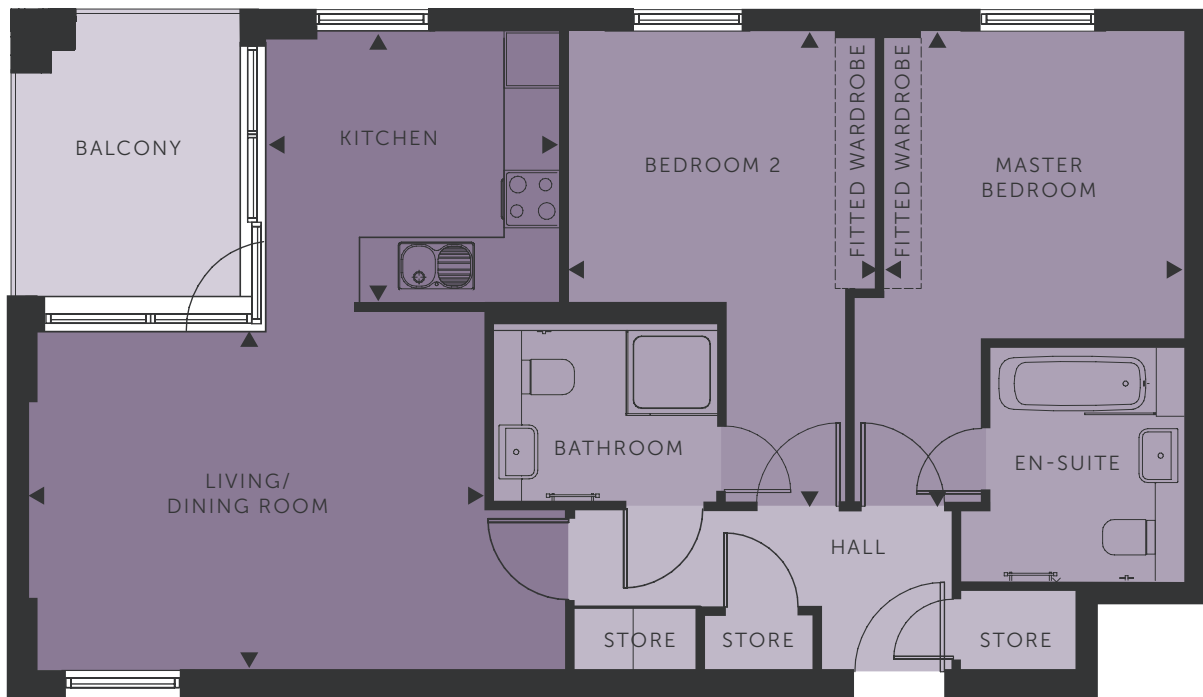
*Handed

UNIT 344* – 2 BEDROOM APARTMENT

Type 10, Pemberton House - £478,000

KEY ROOM DIMENSIONS

KITCHEN	3.08m x 2.80m	10'1" x 9'2"
LIVING/DINING ROOM	4.73m x 3.48m	15'6" x 11'5"
MASTER BEDROOM	4.92m x 3.11m	16'1" x 10'2"
BEDROOM 2	4.92m x 3.11m	16'1" x 10'2"
GROSS INTERNAL FLOOR AREA	70.80 sq m	762.08 sq ft
BALCONY	6.43 sq m	69.21 sq ft



LEVEL LOCATION FLOOR LOCATOR

- 6th floor
- 5th floor
- 4th floor
- 3rd floor
- 2nd floor
- 1st floor
- Ground floor



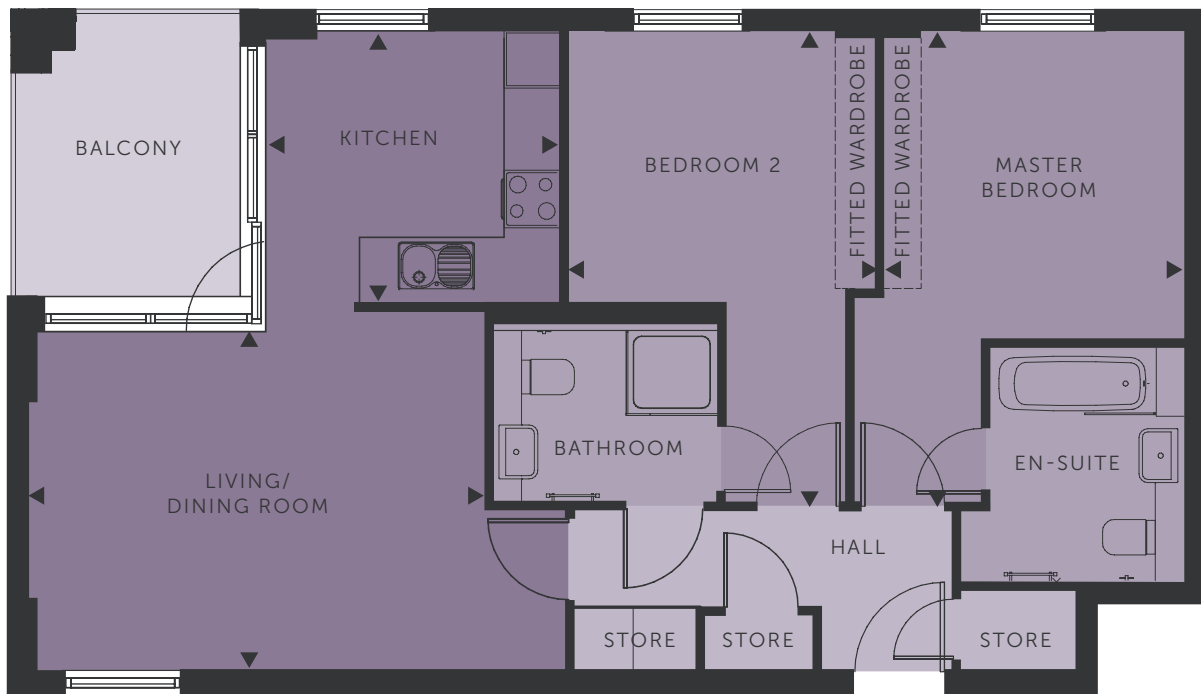
*Handed

UNIT 354* – 2 BEDROOM APARTMENT

Type 10, Pemberton House - £480,500

KEY ROOM DIMENSIONS

KITCHEN	3.08m x 2.80m	10'1" x 9'2"
LIVING/DINING ROOM	4.73m x 3.48m	15'6" x 11'5"
MASTER BEDROOM	4.92m x 3.11m	16'1" x 10'2"
BEDROOM 2	4.92m x 3.11m	16'1" x 10'2"
GROSS INTERNAL FLOOR AREA	70.80 sq m	762.08 sq ft
BALCONY	6.43 sq m	69.21 sq ft



LEVEL LOCATION FLOOR LOCATOR

- 6th floor
- 5th floor
- 4th floor
- 3rd floor
- 2nd floor
- 1st floor
- Ground floor



*Handed